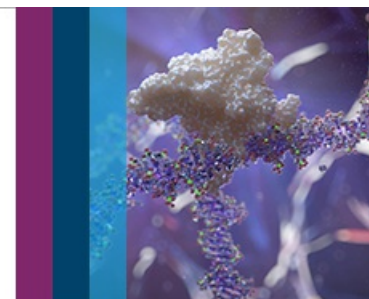


# Drug Discovery and Development Live Global Event

Agilent cell analysis virtual conference



Date	Time	Track	Presentation Title	Speaker
Nov 30 - Dec 1	Nov 30 12:00 - Dec 1 12:00 AM		Defining the Bioenergetic Metabolite Interactome in Human Subjects	Victor Darley-Usmar, Ph.D. Associate Dean for Research, Endowed Professor in Mitochondrial Medicine and Pathology, University of Alabama at Birmingham
Nov 30 - Dec 1	Nov 30 12:00 - Dec 1 12:00 AM		Metabolic regulation of adaptive immune cell function	Sandra Milasta, PhD Senior Scientist, Immunotherapy, Pre-clinical Development, Elevatebio
9-Dec	11:30 - 12:30 PM	QUBES: A rapid approach for predicting the stability of proteins	QUBES: A rapid approach for predicting the stability of proteins	Chris Pudney, PhD Associate Professor of Biophysics, University of Bath; Director, BLOC Laboratories Ltd
9-Dec	01:00 - 02:00 PM	Using Physical Chemistry and a High-Throughput Drug Screen to Find a Drug to Treat Sickle Cell Disease	Using Physical Chemistry and a High-Throughput Drug Screen to Find a Drug to Treat Sickle Cell Disease	Emily Dunkelberger, PhD Staff Scientist, Laboratory of Chemical Physics, National Institute of Diabetes and Digestive and Kidney Diseases, National Institutes of Health
10-Dec	11:30 - 12:30 PM		Mechanism-based Off-target Screening De-risks Clinical Development of Antiviral Nucleoside/tide Drugs	Joy Feng, PhD Principal Scientist, Gilead Sciences, Inc.
10-Dec	01:00 - 02:00 PM	Using an unbiased drug discovery platform to uncover a novel immunogenic cell death	Using an unbiased drug discovery platform to uncover a novel immunogenic cell death	Charly Chahwan, PhD Co Founder, CSO at SyntheX, Inc.